

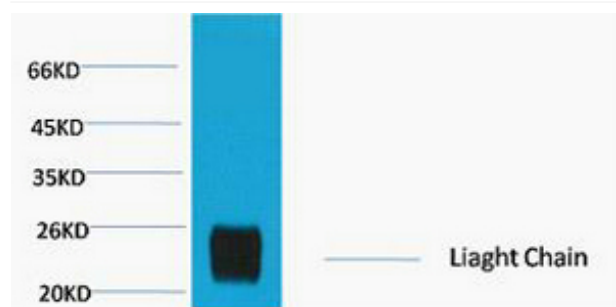


Rabbit IgG (Light Chain Specific) Monoclonal Antibody(8D6)

Catalog No	YP-Ab-04762
Isotype	IgG
Reactivity	Rabbit
Applications	WB
Gene Name	
Protein Name	
Immunogen	Recombinant Protein of Rabbit IgG (Light Chain Specific)
Specificity	The antibody reacts with the light chains on rabbit IgG and with those common to other rabbit immunoglobulins. The antibody does not react with the heavy chain of rabbit IgG. The antibody minimal cross
Formulation	PBS, pH 7.4, containing 0.5%BSA, 0.02% sodium azide as Preservative and 50% Glycerol.
Source	Monoclonal, Mouse
Purification	The antibody was affinity-purified from mouse ascites by affinity-chromatography using specific immunogen.
Dilution	WB: 1:2000-5000
Concentration	1 mg/ml
Purity	≥90%
Storage Stability	-20°C/1 year
Synonyms	
Observed Band	25kD
Cell Pathway	
Tissue Specificity	
Function	
Background	Whole IgG antibodies are isolated as intact molecules from antisera by immunoaffinity chromatography. They have an Fc portion and two antigen binding Fab portions joined together by disulfide bonds and therefore they are divalent. The average molecular weight is reported to be about 160 kDa. The Light Chain Specific antibody reacts with light chain of IgG but not with the heavy chain of IgG.
matters needing attention	Avoid repeated freezing and thawing!

Usage suggestions

This product can be used in immunological reaction related experiments. For more information, please consult technical personnel.

Products Images

Western blot analysis of Reduced Rabbit IgG, H+L, diluted at 1:10000.